

Directions: Fill in the blanks using the words in the Word Bank.

Muscular System

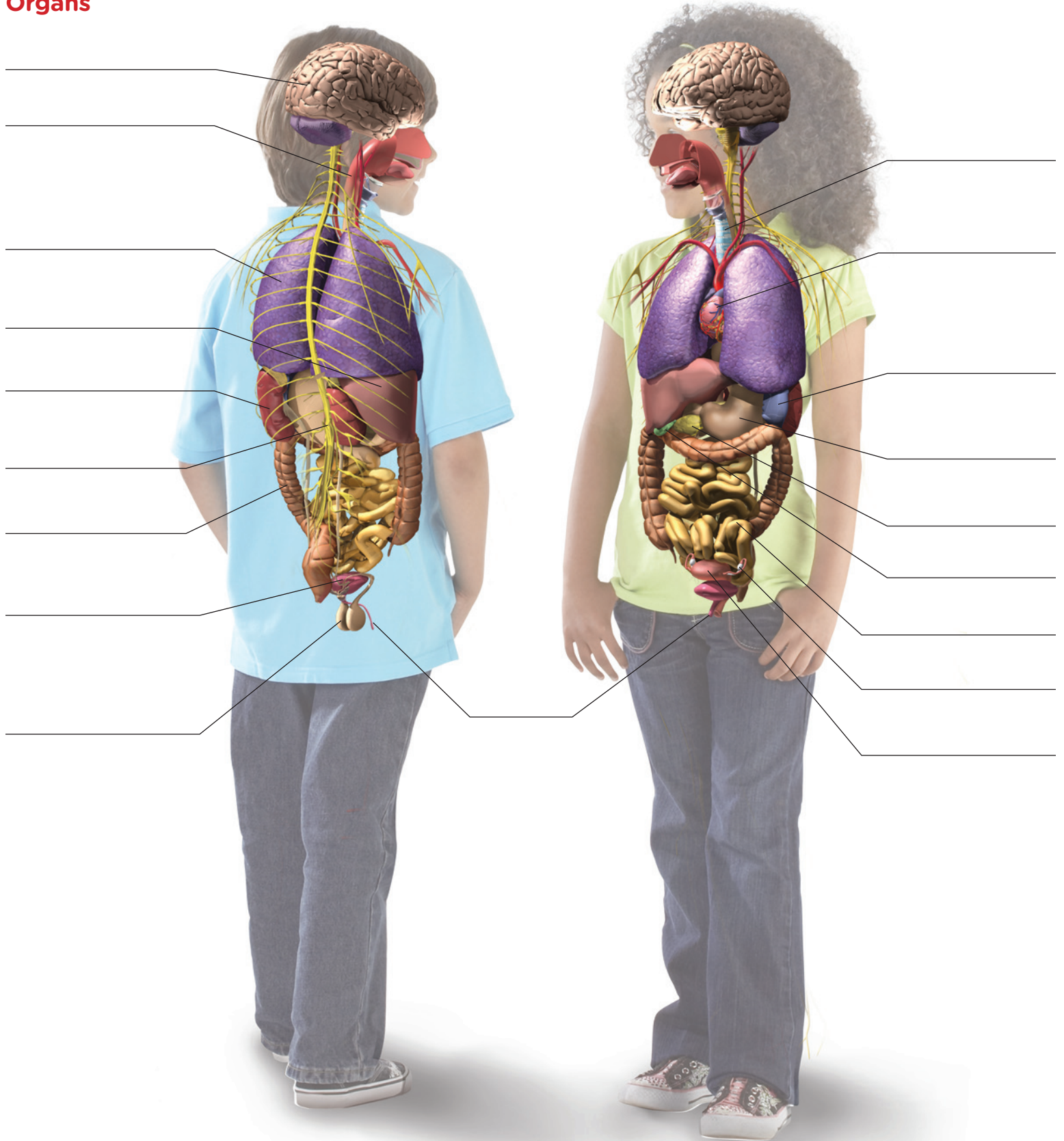


Word Bank:

abdominal muscles (rectus abdominis), back muscle (latissimus dorsi), bicep, calf muscle (gastrocnemius), chest muscle (pectoralis major), deltoid, external oblique, gluteus maximus, hamstring muscles, quadriceps, trapezius, tricep

Directions: Fill in the blanks using the words in the Word Bank.

Organs

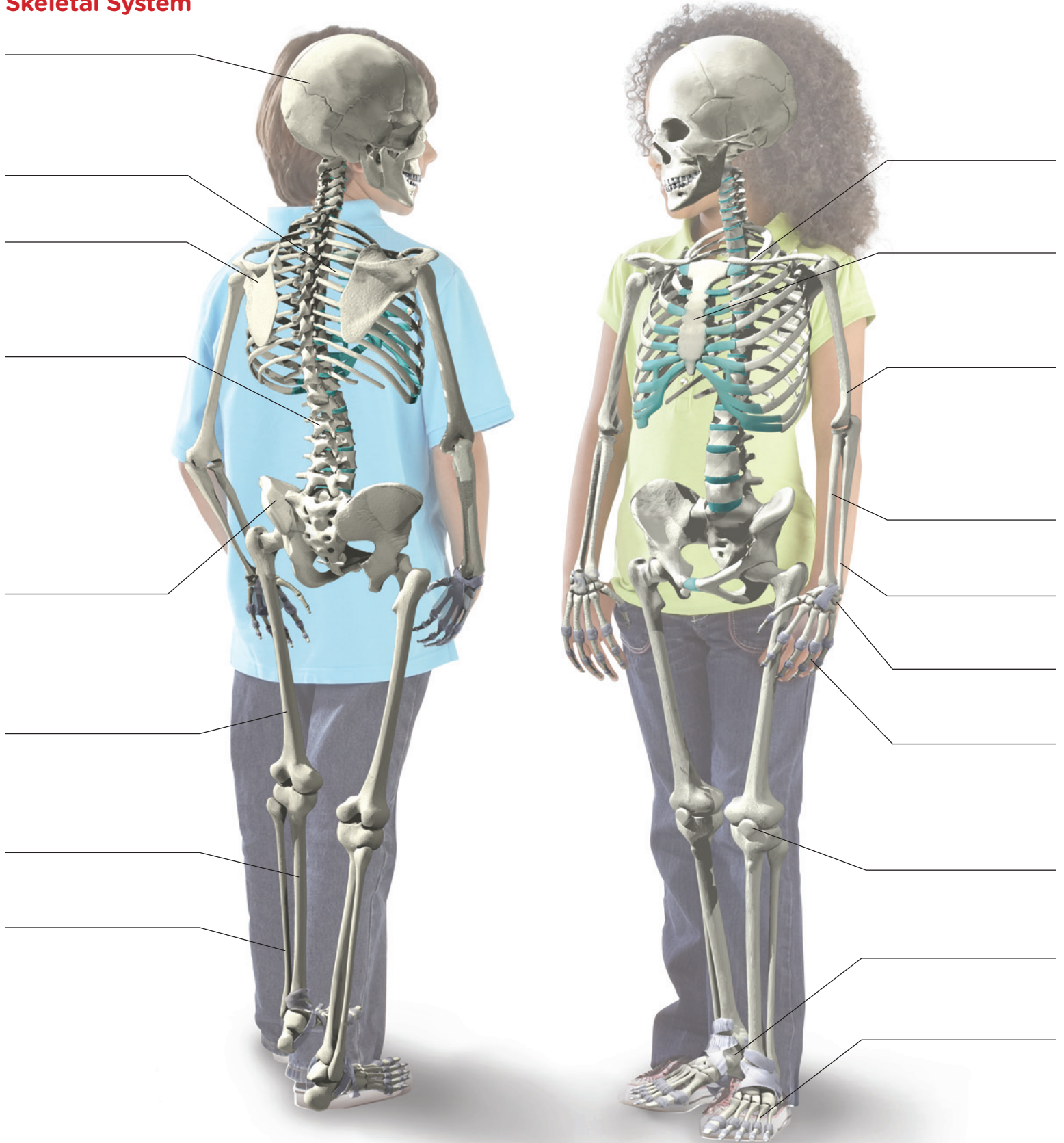


Word Bank:

bladder, brain, esophagus, gallbladder, heart, kidney, large intestine, liver, lung, ovary, pancreas, small intestine, spinal cord, spleen, stomach, testicle, trachea, urethra, uterus

Directions: Fill in the blanks using the words in the Word Bank.

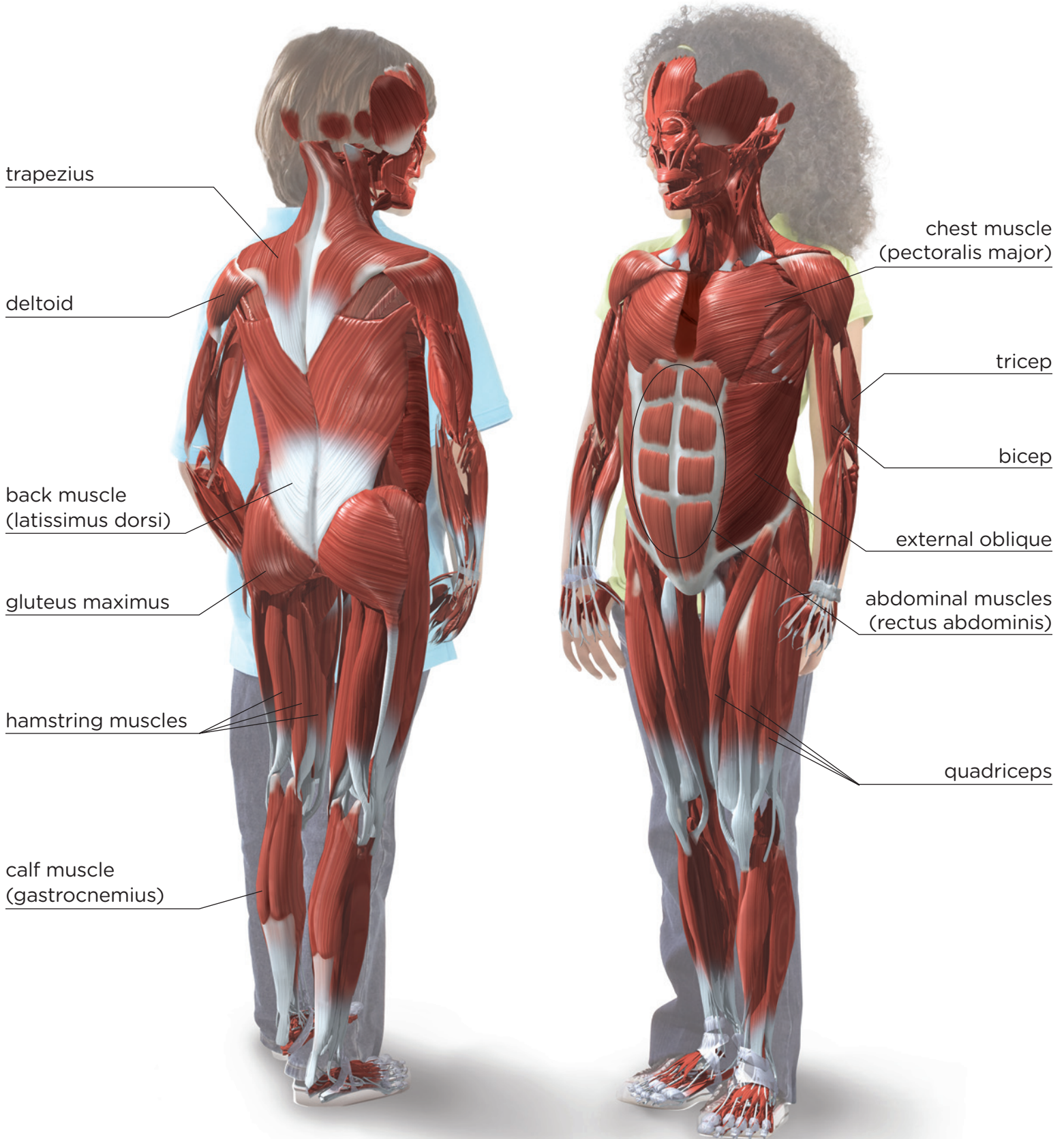
Skeletal System



Word Bank:

carpals (wrist bones), clavicle (collarbone), cranium (skull), femur, fibula, humerus, patella (kneecap), pelvis (hipbone), phalanges (finger bones), phalanges (toe bones), radius, rib, scapula, sternum (breastbone), tarsals (ankle bones), tibia, ulna, vertebra (backbone)

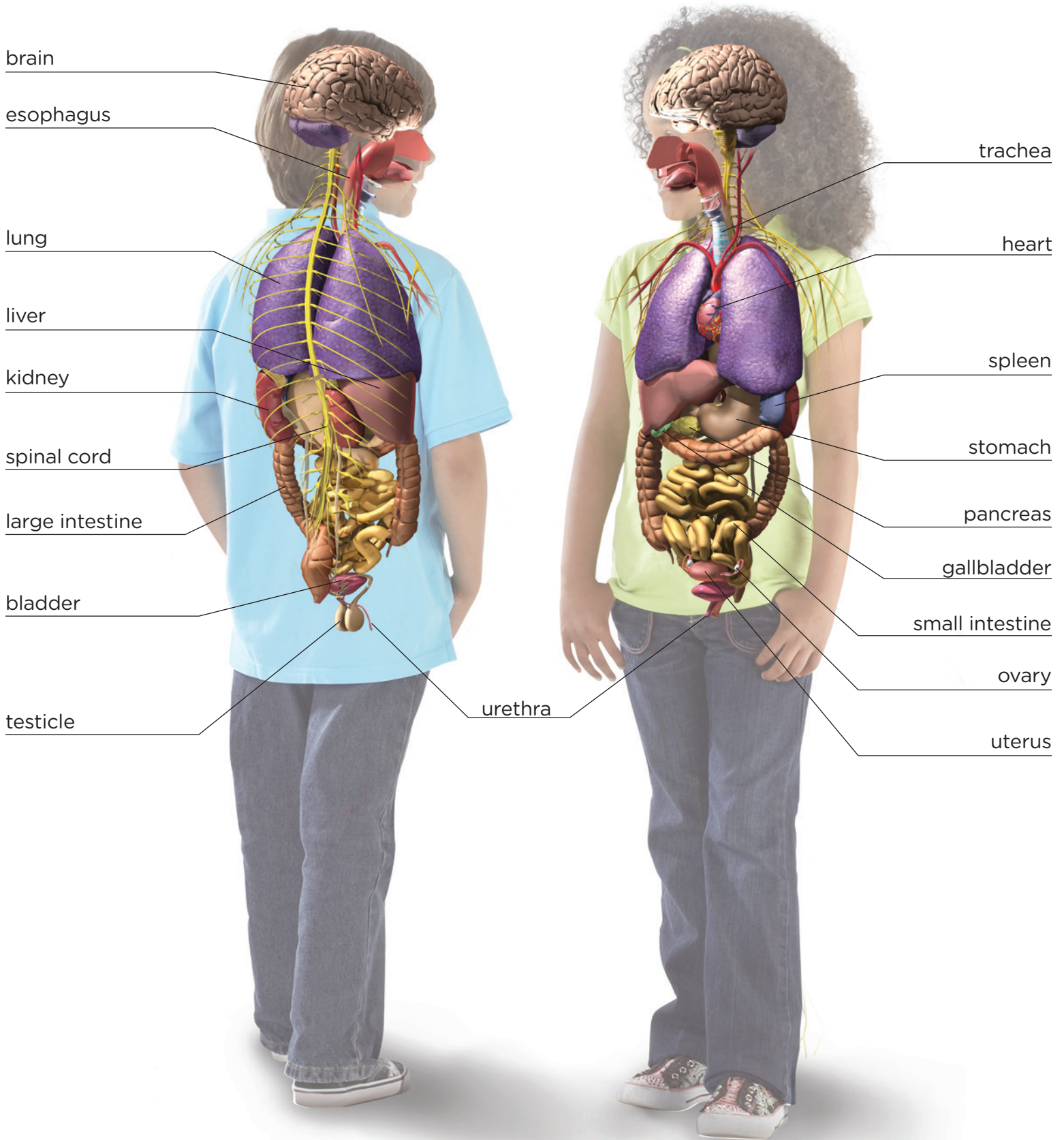
Answer Key: Muscular System



Word Bank:

abdominal muscles (rectus abdominis), back muscle (latissimus dorsi), biceps, calf muscle (gastrocnemius), chest muscle (pectoralis major), deltoid, external oblique, gluteus maximus, hamstring muscles, quadriceps, trapezius, triceps

Answer Key: Organs



Word Bank:

bladder, brain, esophagus, gallbladder, heart, kidney, large intestine, liver, lung, ovary, pancreas, small intestine, spinal cord, spleen, stomach, testicle, trachea, urethra, uterus

Answer Key: Skeletal System

cranium (skull)

rib

scapula

vertebra
(backbone)

pelvis (hipbone)

femur

tibia

fibula

clavicle
(collarbone)

sternum
(breastbone)

humerus

radius

ulna

carpals
(wrist bones)

phalanges
(finger bones)

patella (kneecap)

tarsals
(ankle bones)

phalanges
(toe bones)

Word Bank:

carpals (wrist bones), clavicle (collarbone), cranium (skull), femur, fibula, humerus, patella (kneecap), pelvis (hipbone), phalanges (finger bones), phalanges (toe bones), radius, rib, scapula, sternum (breastbone), tarsals (ankle bones), tibia, ulna, vertebra (backbone)