

Glossary and Model Guide: The Skeletal System

Use this glossary and model guide to identify and locate the bones on the skeletal system model. The numbers in parentheses correspond to the numbers on the model. Definitions of the skeletal bones have been arranged from head to foot and organized by the two sections of the skeletal system: axial and appendicular.

axial skeleton: consists of the cranium (the skull), the vertebrae (the spine), sternum (breast bone) and ribs [1-44, CI and LI]

cranium: skull [1-41]

cranial cavity: the area inside of the skull includes

anterior cranial [1,5,6]

middle cranial [2,4,7]

posterior cranial [3]

frontal: forms part of the cranial cavity as well as the forehead, the brow ridges and the nasal cavity [23-24]

parietal: forms much of the top and side portions of the cranium [25-26]

sphenoid: forms part of the eye orbit and helps to form the floor of the cranium [29]

temporal: forms the side walls of the cranium as well as housing the external ear [28,31-34]

occipital: forms the back and bottom portion of the cranium [35-41]

maxilla: upper jawbone [9-13]

mandible: lower jawbone [14-17]

palatine: forms a portion of the nasal cavity and the back portion of the roof of the mouth [19]

vomer: forms part of the nasal septum (the divider between the nostrils) [20]

lacrimal: forms the orbits (eye area) [21]

nasal: forms the top portion of the bridge of the nose [22]

zygomatic: cheekbones; form portions of the orbits as well [30]

vertebrae: spinal column; extends from the base of the skull to the coccyx [CI,LI]

rib cage: extends from the vertebrae to protect the organs of the upper body [I-X]

sacrum: located at the base of the spine; contains five fused vertebrae [42-43]

coccyx: tailbone; a group of four small bones at the lower end of the sacrum [44]

sternum: breastbone; protects the center of the chest and is connected to the rib cage [45-47]

appendicular skeleton: includes the two limb girdles (shoulder and pelvis) and their attached limbs [45-59]

coxal (pelvic girdle): hip bone; provides a strong stable platform for supporting the organs of the abdomen and pelvis [54 a-l]

scapula: shoulder bone; located behind the chest [48 a-k]

clavicle: collar bone; attaches to the sternum to give strength to the shoulders [49 a-b]

humerus: long bone in the upper arm and part of the shoulder and elbow joints [50 a-l]

ulna: larger of the two bones of the forearm; located on the fifth finger side [51 a-d]

radius: smaller of the two bones of the forearm; located on the thumb side [52 a-b]

carpus: eight bones that make up the wrist [53 a-h]

metacarpus: hand bones that allow fingers to spread and close 53[i]

phalanges: finger, thumb and toe bones; the fingers have three bones and the thumb and big toe have two bones [53 j-k, 59 h]

femur: thigh bone located in the upper leg; part of the hip and knee joints of the lower leg [55 a-h]

patella: knee bone and part of the knee joint [56]

tibia: shin bone located in front of the lower leg [57 a-d]

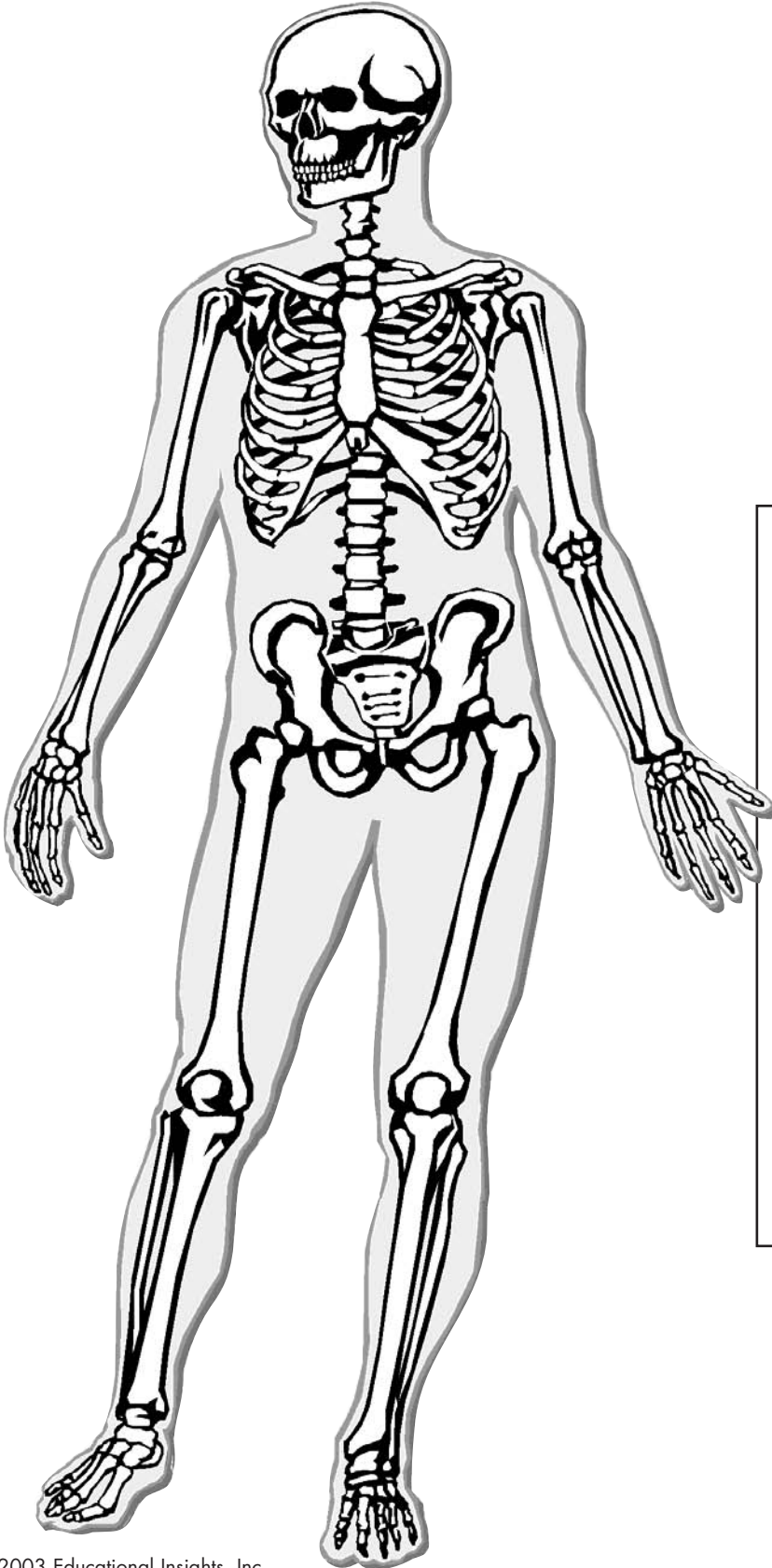
fibula: calf bone located in back of the lower leg [58 a-b]

talus: ankle bones [59 a-f]

metatarsus: foot bones [59 g]

The Two Sections of the Skeleton

Show the different parts of the skeleton by coloring the axial and the appendicular sections of the skeleton. Color the axial section of the skeleton red and the appendicular section yellow.



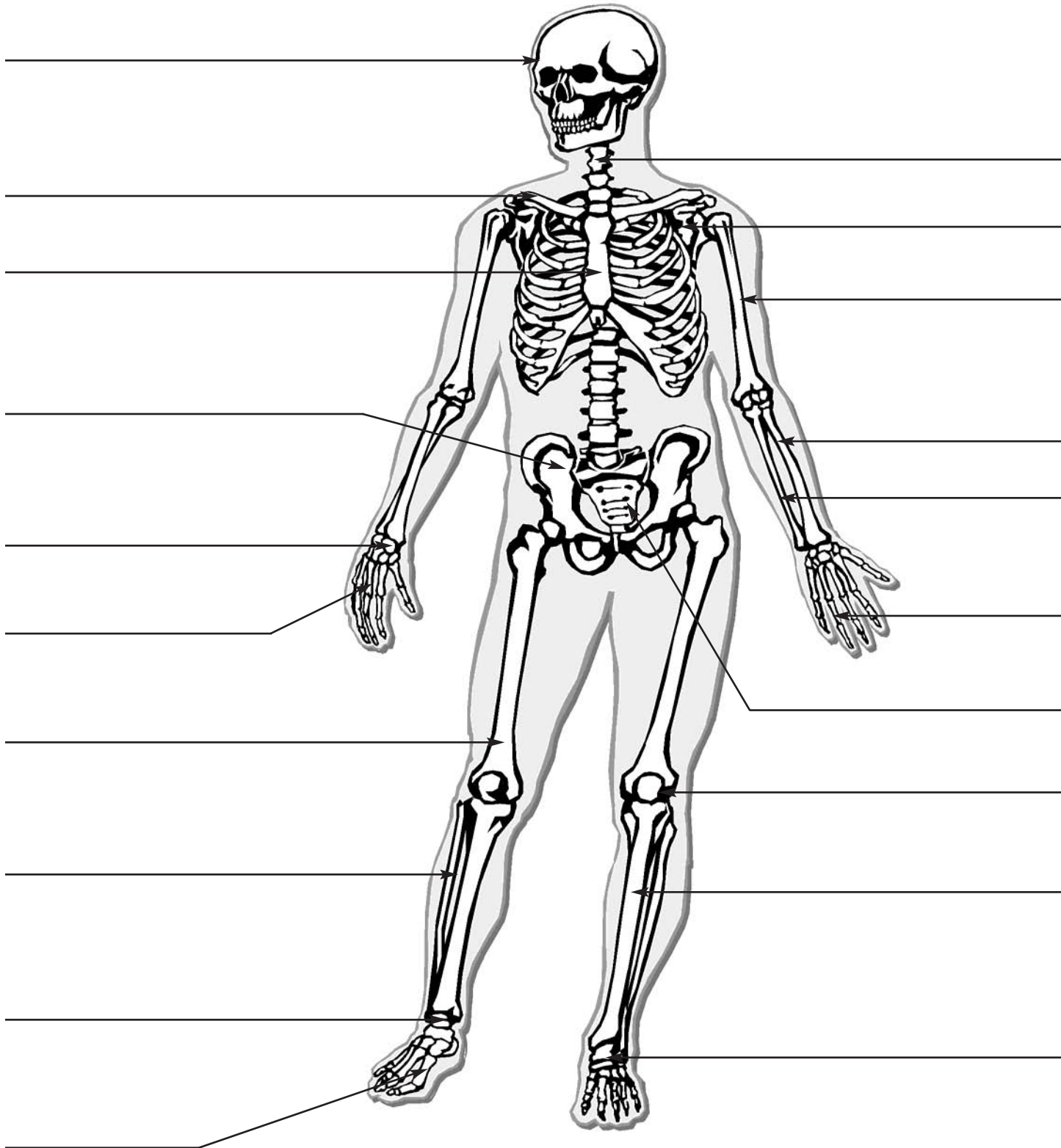
Skeleton Fun Facts:

- Babies are born with 275 bones, but an adult has only 206 bones.
- Scientists can tell the age, sex, general health, and usually how a person died by looking at the skeleton.
- Fractures, actual breaks in the bone, can take anywhere from a month to six months to heal.
- Bones also manufacture blood cells and store useful minerals.
- The smallest bones are in your ear. The largest bone, the femur, is found in your thigh.
- Your bones are constantly being replaced. Although an adult may be 35 years old, most of his or her skeleton is only 10 years old.
- Although a bone may look solid, each bone is made up of three major sections: the compact bone, the soft bone marrow, and the sponge bone.

Name _____ Date _____

Name the Bones

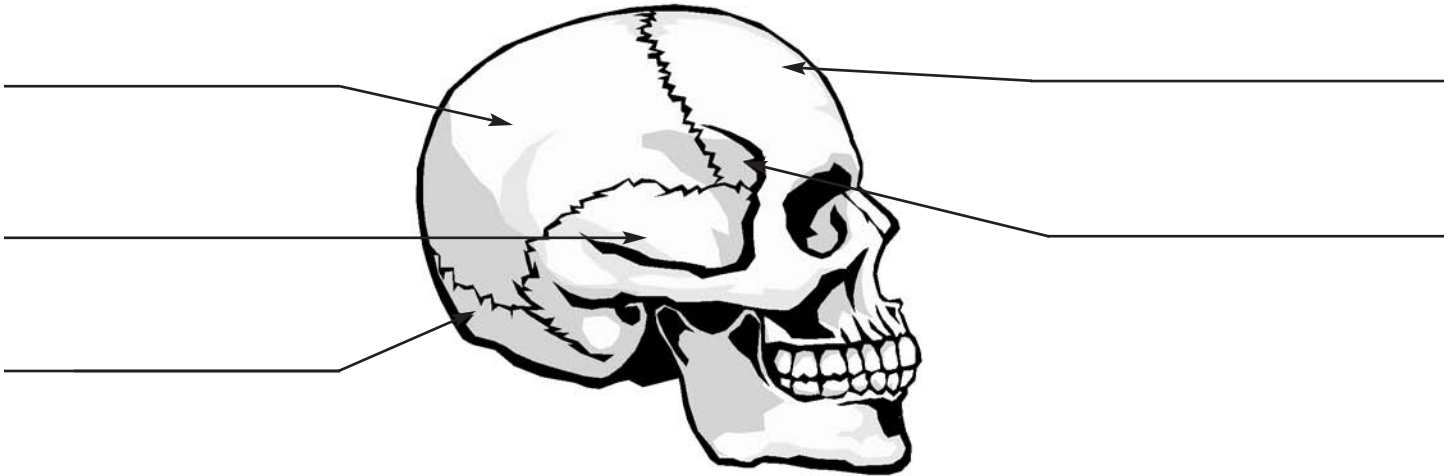
Identify the correct bone by writing the name of the bone on the line pointing to it.



Name _____ Date _____

Name the Cranial and Facial Bones

Identify the correct bone by writing the name of the bone on the line pointing to it.



Name _____

Date _____

Skeleton Word Search

Find the skeleton vocabulary in the puzzle below by looking forwards, backwards, and diagonally.

K T P R L A S A N P T O P T U V M U C P A I D Q N
U R J G J M Z I Y P M E L I C Z L W H F B E A H F
W X W V C T E V C A Q U L B L N A B L H O Y U H L
O C U G O E D V N R T L U I A O R Y O H U Y U S E
C C O G C E N D U I F W O A V R I B C A G E I B S
A I X X U G I X B E W B T K I L O I L J A T J F E
R P S L A B Y Z G T Y X L V C K Z K J Z E U T S I
P D N B L L S R D A X T H X L T M J C M G Z E N M
U A I E F T U K C L W I E O E A R Q P X B W U U N
S R N E S E G N A L A H P C X R T O Y B P R N Q F
G M P D V W M U I N A R C I U R R C I Q S R J E U
M E T A C A R P U S H D L W V A C X A M E E M V L
R F D H R T C G A T L L X H L O P H J T H U O D O
K L A T N O R F O E A K Y L C H N U S N R F L R S
M J E V Q V O T D H N W A R J A B K A T D A P D C
A H S A C R U M Y Q B I D S U S R A T A T E M I A
L E J A Z N D Y A Z G T T Y Z E D T K I L T E H P
L D V E R T E B R A E G V A T S Z Q P R D H Y W U
E W T X C Q P C V T M A L J L R F I S Y R U F A L
T V D K I F P M C H Q R Y J J A C T M J U M I Z A
A O A S R H Q S R A D I U S J C P V U B X E B I T
P F Y V O M E R V Q I O F K O T M H W D K R U N A
D Z B D F C M Q D G C I T A M O G Y Z D J U L A L
F C O T E Q L T A T Z R C I B C C D O N U S A Z U
Q G N X S P H E N O I D L A M I R C A L H R F U S

CARPUS
FEMUR
MANDIBLE
OCCIPITAL
RADIUS
STERNUM
VERTEBRAE

CLAVICLE
FIBULA
MAXILLA
PALATINE
RIB CAGE
TALUS
VOMER

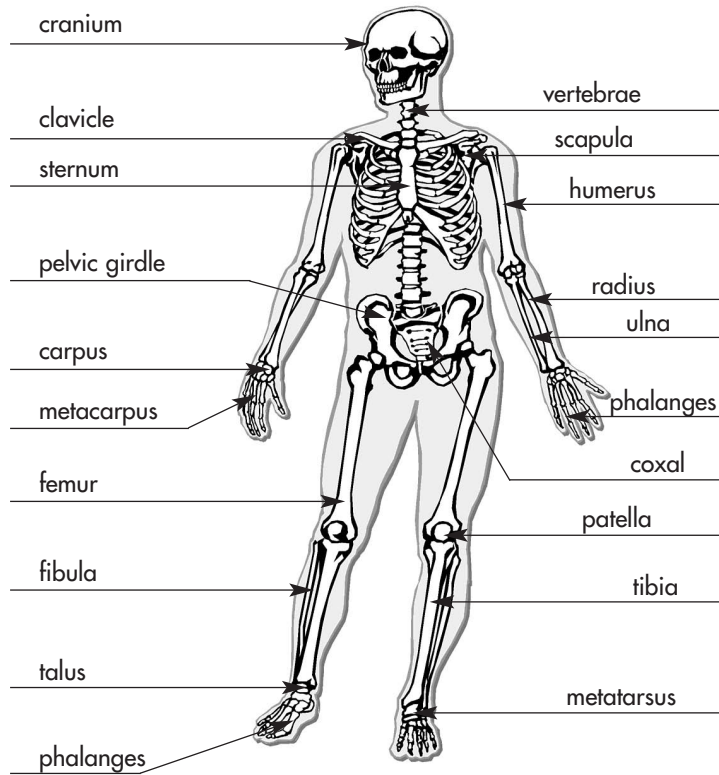
COCCYX
FRONTAL
METACARPUS
PARIETAL
SACRUM
TEMPORAL
ZYGOMATIC

COXAL
HUMERUS
METATARSUS
PATELLA
SCAPULA
TIBIA

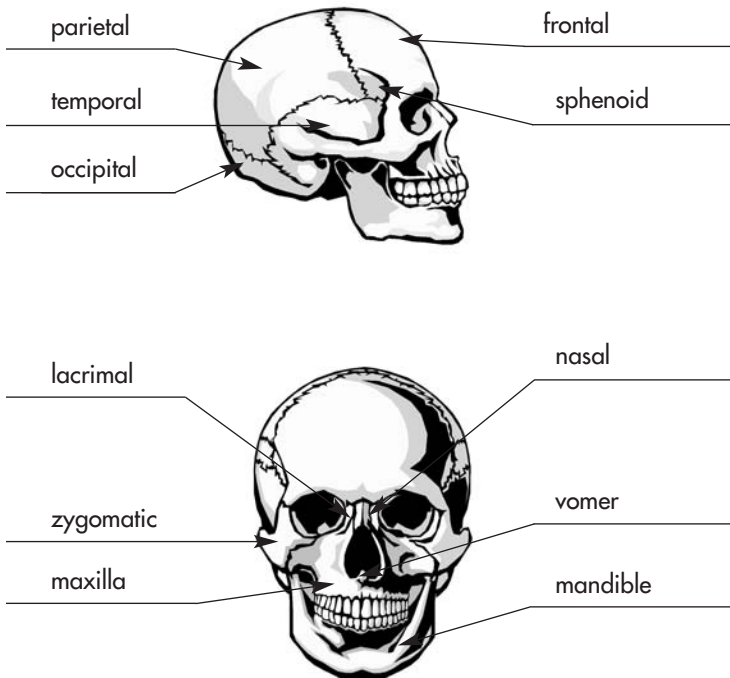
CRANIUM
LACRIMAL
NASAL
PHALANGES
SPHENOID
ULNA

Answer Sheet

Name the Bones



Name the Cranial and Facial Bones



Brain Word Search

